

10 August 2017

610.13932-L03-v1.0.docx

Meriton
Level 11, 528 Kent Street
SYDNEY NSW 2000

Attention: Mr. Walter Gordon

Dear Walter

130-150 Bunnerong Road, Pagewood - UB5W Levels 16 and 20 Private Terraces Wind Mitigation Update

SLR has previously completed a number of qualitative (Desktop) wind reports and a quantitative Computational Fluid Dynamics (CFD) wind modelling assessment, covering various elements of the UB5W Project located at Bunnerong Road, Pagewood.

- SLR Report 610.13932.00100-R1 dated 2 February 2016
- SLR Report 610.13932.00100-L01 dated 12 July 2017
- SLR Report 610.13932.00100-L02 dated 25 July 2017

Based off the findings of these reports, relating to wind speeds at the Level 16 and Level 20 private terraces of the development, SLR made recommendations highlighting further wind mitigations that should be incorporated into the final design, specifically:

- Retain the proposed 1.4 m vertical windbreak (ie balustrade) surrounding the open spaces of the Level 16 and Level 20 terraces areas;
- Increase the height of the vertical wind screen to 1.8 m (1.4 m balustrade + 0.4 m planter) to the north and south sides of the Level 20 terraces;
- Use Pergolas or similar over seating areas to mitigate potential downwash winds for the Level 16 open terraces.

From provided Landscape plans for the rooftop spaces, SLR can confirm that the above recommendations have been implemented in latest designs, providing suitable wind mitigation consistent with previous report findings. Proposed mitigations are highlighted in **Figure 1** to **Figure 3**, provided herein.

Yours sincerely,

JAMES CLEARY

Checked/ Authorised by: Neihad Al-Khalidy
--

Figure 1 Wind Mitigations Level 16

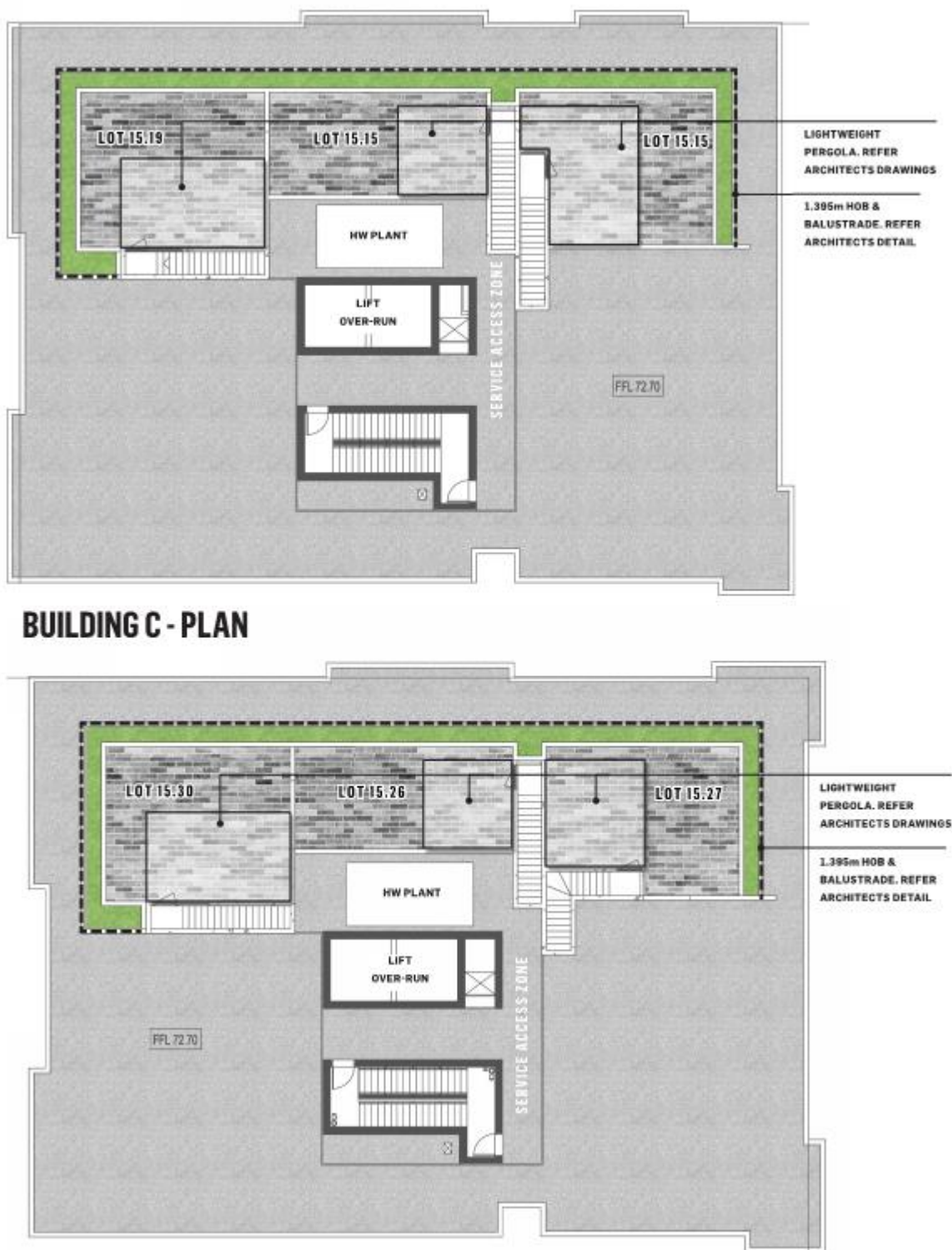


Figure 2 Wind Mitigations Level 20



Figure 3 1.8m Planter Box and Hedge Wind Break

